

Technical Data 技术参数

项目 Characteristics	检测标准 Standards	结果 Result
长度 Length	EN ISO 24337 ASTM F3261 GB/T 34440-2017	$\Delta l \leq 0.3\text{mm/m}$ $\pm 0.45\text{mm}$ 228.6<l≤304.8, ±0.3; l>304.8, ±0.5mm
宽度 Width	EN ISO 24337 ASTM F3261 GB/T 34440-2017	$\Delta w_{\text{avg}} \leq 0.1\text{mm}$ $\pm 0.45\text{mm}$ 228.6<l≤304.8, ±0.3; l>304.8, ±0.5mm
厚度偏差 Thickness	EN ISO 24337 ASTM F3261 GB/T 34440-2017	$\Delta t_{\text{avg}} \leq 0.5\text{mm}$ $\pm 0.13\text{mm}$ -0.1 mm ≤ X ≤ 0.13 mm
直角度 Squareness	EN ISO 24337 ASTM F2055 GB/T 34440-2017	$Q_{\text{max}} \leq 0.2\text{mm}$ $\text{MAX} \leq 0.25\text{mm}$ l≤304.8mm, ≤0.25mm; l>304.8mm, ≤0.35mm
直线度 Straightness	EN ISO 24337 GB/T 34440-2017	$S_{\text{max}} \leq 0.3\text{mm} / \text{m}$ ≤ 0.20mm
锁扣型地板拼装间隙 Gap	ISO 10582 GB/T 34440-2017	$\text{Avg} \leq 0.1\text{mm}$, $\text{Max} \leq 0.15\text{mm}$ $\text{Avg} \leq 0.15\text{mm}$, $\text{Max} \leq 0.20\text{mm}$
残余凹陷 Residual indentation	ISO 24343-1 ASTM F1914 GB/T 4085-2015	≤ 0.10mm Maximum single reading 10% 0.15mm ≤ IR ≤ 0.40mm
耐光色牢度 Color fastness to light	EN ISO 105-B02 ASTM F1515 GB/T 4085-2015	蓝色羊毛标准Blue wool scale ≥ 6 $\Delta E \leq 8$ 蓝色羊毛标准Blue wool scale ≥ 6
剥离强度 Ply adhesion	ISO 24345 GB/T 2792-2014	通过Pass ≥ 75N / 50mm
耐污染性 Resistance to chemicals	ISO 26897 ASTM F925 GB/T 11982.1-2005	Class 0 优秀Excellent 表面无明显变化Pass
加热尺寸变化率 Dimensional stability	ISO 23999 ASTM F2199 GB/T 34440-2017	≤ 0.1% ≤ 0.1% ≤ 0.25%
加热翘曲 High temperature warping	ISO 23999 ASTM F2199 GB/T 34440-2017	± 2mm ± 2mm ≤ 2mm
耐磨等级 Wear resistance	EN 660-2 GB/T 4085-2015	通过Pass T
甲醛释放量 Formaldehyde emission	ISO16000 California Specification 01350 GB 18580-2017	通过N.D. ≤ 9 $\mu\text{g} / \text{m}^3$ 通过N.D.
重金属 Heavy metal	EN 71 ASTM F963 GB 18586-2001	Non Toxic Pass Pass
TVOC 检测 (mg/m ³) TVOC emission	ISO 16000 California Specification 01350	TVOC28day ≤ 1.0mg / m ³ Less than / equal to 0.5mg / m ³
防滑等级 Antislip	DIN 51130: 2014	≥ R10
燃烧性能分级 Fire classification	EN 13501-1 ASTM E648 GB 8624-2012	B1-S1 CRF ≥ 5KW/m ² B1



FloraFloor office is
Estival head office :
115 rue Cardinet
75017 Paris

www.florafloor.com(FR)
www.florafloor.com.cn(CN)

7 Series- RCB Click
Sample Folder €7
Second published in April, 2024

FLORAFLOOR 240423



FLORAFLOOR

RCB click - Rigid composite board

7

Series



等级划分 ISO 10874/EN 685

此项欧洲标准提供了一套用于划分弹性、纺织和层压地板覆盖物等级的系统。该等级划分是建立在使用区域的实际要求以及使用强度的基础之上的，并且与欧洲标准中对各类地板覆盖物所指定的要求相关。此项欧洲标准还意在为生产厂商、指定者以及消费者提供指导，使得他们能够为给定的使用区域或具体的房间选择适当等级的地板覆盖物。

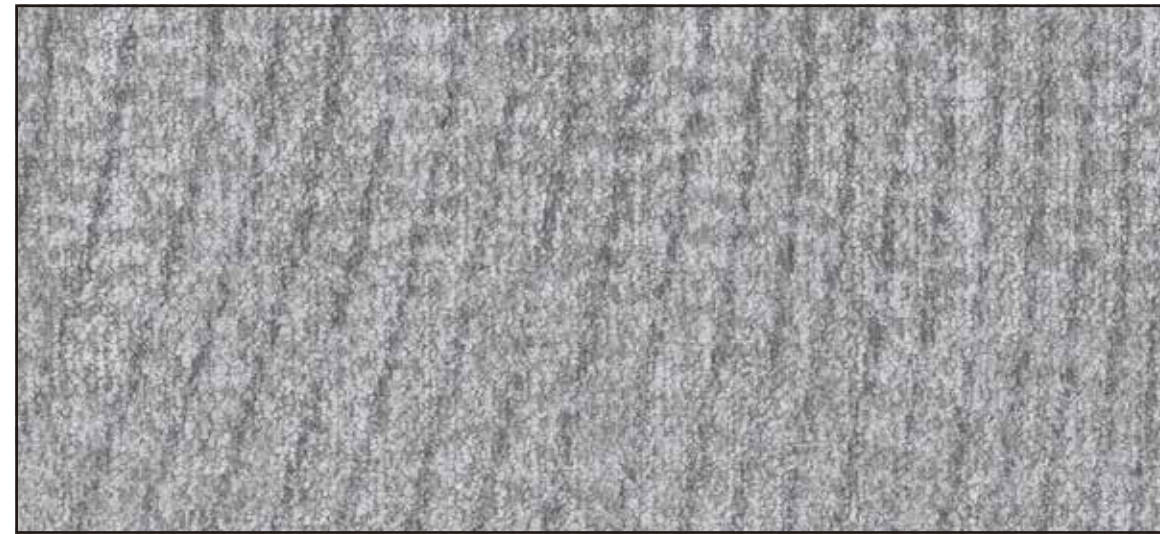
地板覆盖物的外观会受到安装和维护等级，底层地板的状况以及使用类型（鞋的种类，局部交通的密集性等）的影响。在使用该分级系统时应将这些因素都考虑在内。

This Standard describes the various levels of use area, the relevant icons and typical applications. These typical applications may vary from country to country as room usage varies and some applications may require a higher rated product. The system has three specific use categories, with sub-divisions based on type and intensity of traffic. Individual ISO/EN product specifications detail the performance and physical criteria that a product must meet to achieve the classification – and products can meet the criteria of all three groups. When a higher classification number is claimed, the product will meet all the requirements of the lower classes in that group.

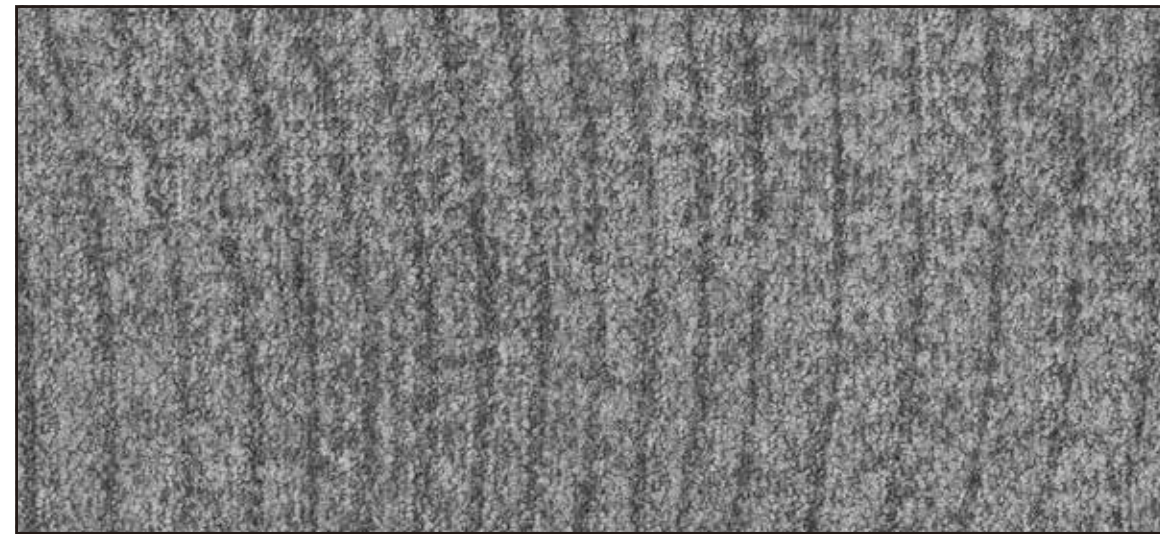
等级 Class	符号 Symbol	描述 Description	使用场景示例 Examples of areas of use
家用等级 domestic	21	间断或低频率使用的家用领域 Areas with low or intermittent use	卧室、餐厅等 Bedroom, dining room
	22	中等流量的家用领域 Areas with medium use	儿童房、客厅、门厅等 Children's room, living room, entrance hall
	23	频繁使用的家用领域 Areas with intense use	厨房、客厅、走廊、门厅等 Kitchen, living room, corridor, office, entrance hall
商用等级 commercial	31	间断或低频率使用的商用领域 Areas with low or intermittent use	酒店、会议室等 Bedroom, hotel, conference room, small office
	32	中等流量的商用领域 Areas with medium traffic	教室、办公室、图书馆等 Classrooms, offices, libraries, etc
	33	频繁使用的商用领域 Areas with heavy traffic	商店、学校等 Corridor, department store, school, etc
	34	非常繁忙剧烈使用的商用领域 Areas with intense use	机场、多功能厅、柜台大厅、超市等 Airport, multi-purpose hall, counter hall, department store
工业等级 industrial	41	间断或低频率使用的工业领域 Areas where work is mainly sedentary with occasional use of light vehicles	装配车间等 Electronic assembly, precision engineering
	42	中等流量的商用领域 Areas where work is mainly standing and/or with vehicular traffic	教室、办公室、图书馆等 Classrooms, offices, libraries, etc
	43	频繁使用的商用领域 Other light industrial areas	商店、学校等 Storage room, production hall

从上表中可以看出，等级21-23类表示地板适合家庭使用，等级31-34类表示地板适用于更密集的“商业”用途。等级41-43类表示地板可以在工业环境中使用。虽然第一个数字给出了一般环境的概念（2 家用，3 商业，4 工业），但第二个数字将这种用法进一步细分为“轻”（1）、“中等”（2）、“重”（3）和“非常重”（4）。

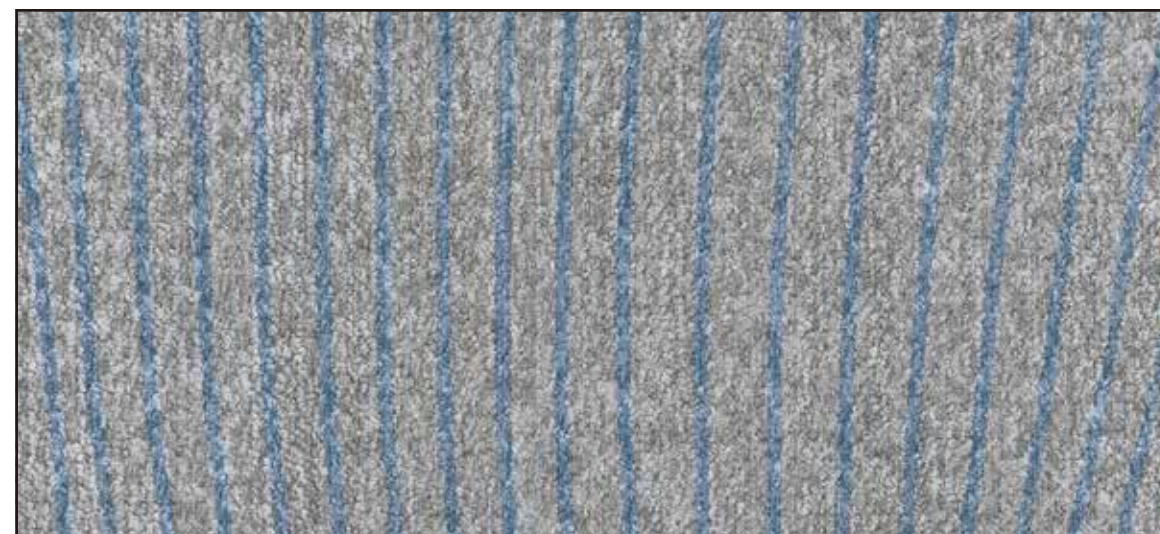
As can be seen in the above table Classes 21-23 mean a flooring is fit for domestic use, classes 31 to 34 indicate a flooring is fit for more intensive, 'commercial' use. Classes 41 to 43 indicate a flooring can be used in industrial environments. While the first digit gives an idea of the general environment (2: domestic, 3: commercial, 4: industrial), the second digit further subdivides this usage into 'light' (1), 'moderate' (2), 'heavy' (3) and 'very heavy' (4).



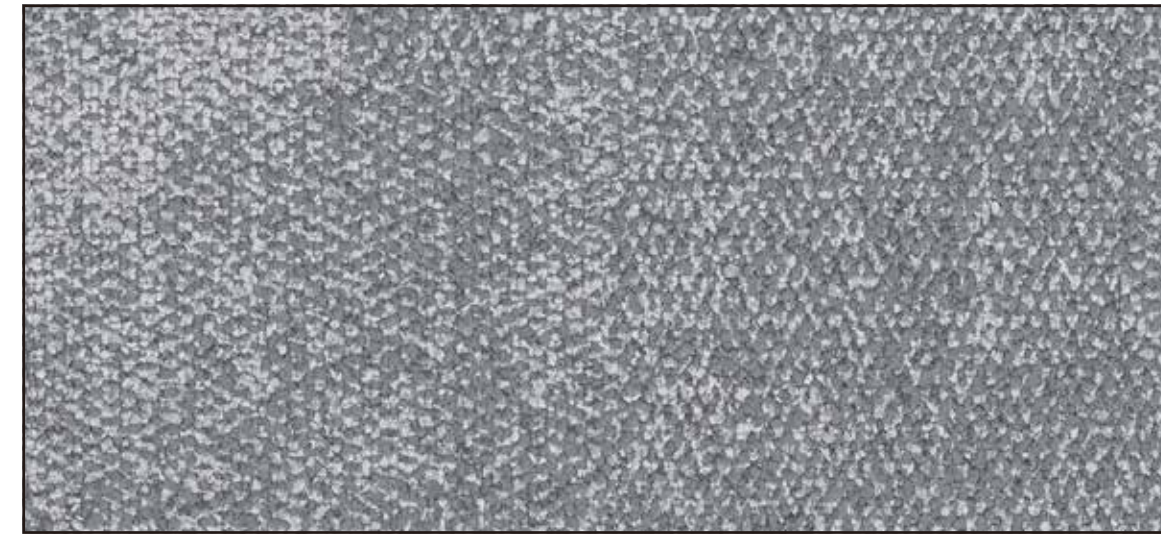
FRC-55063 914.4mm x 304.8mm 5mm + 1.5mm(IXPE)



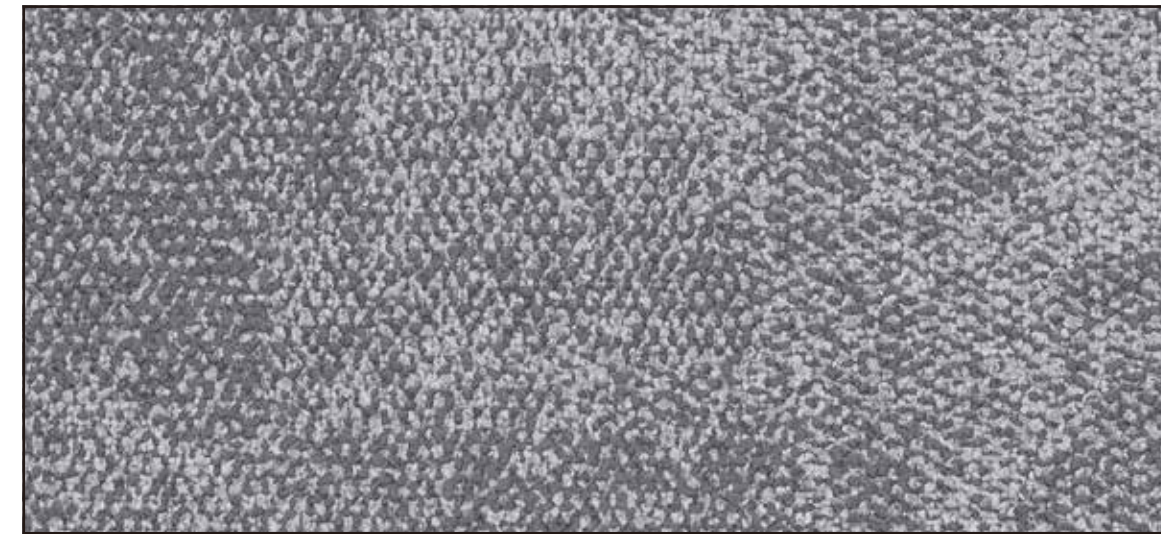
FRC-55064 914.4mm x 304.8mm 5mm + 1.5mm(IXPE)



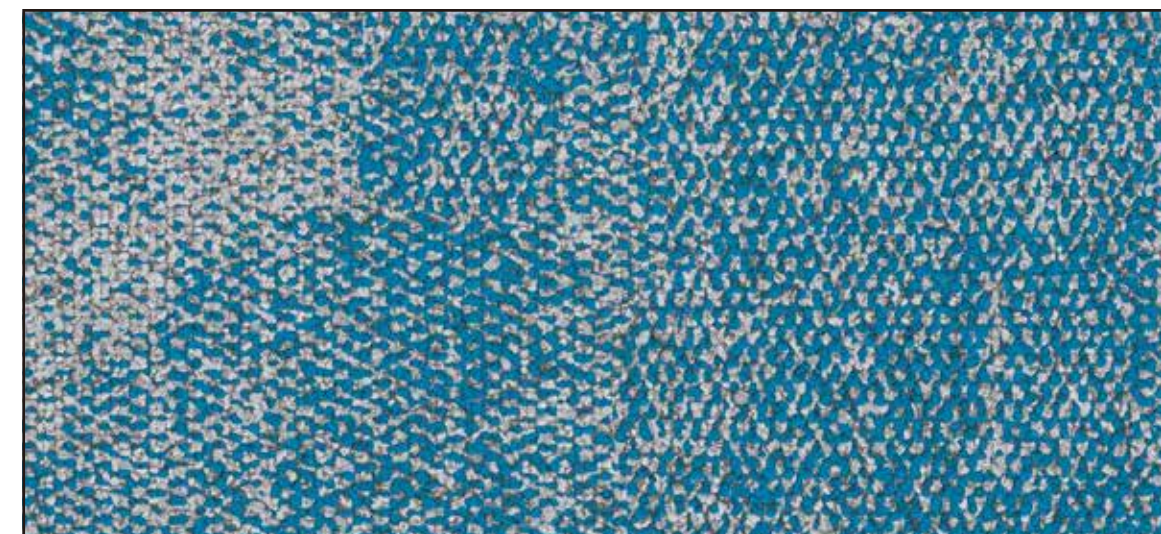
FRC-55065 914.4mm x 304.8mm 5mm + 1.5mm(IXPE)



FRC-55066 914.4mm x 304.8mm 5mm + 1.5mm(IXPE)



FRC-55067 914.4mm x 304.8mm 5mm + 1.5mm(IXPE)



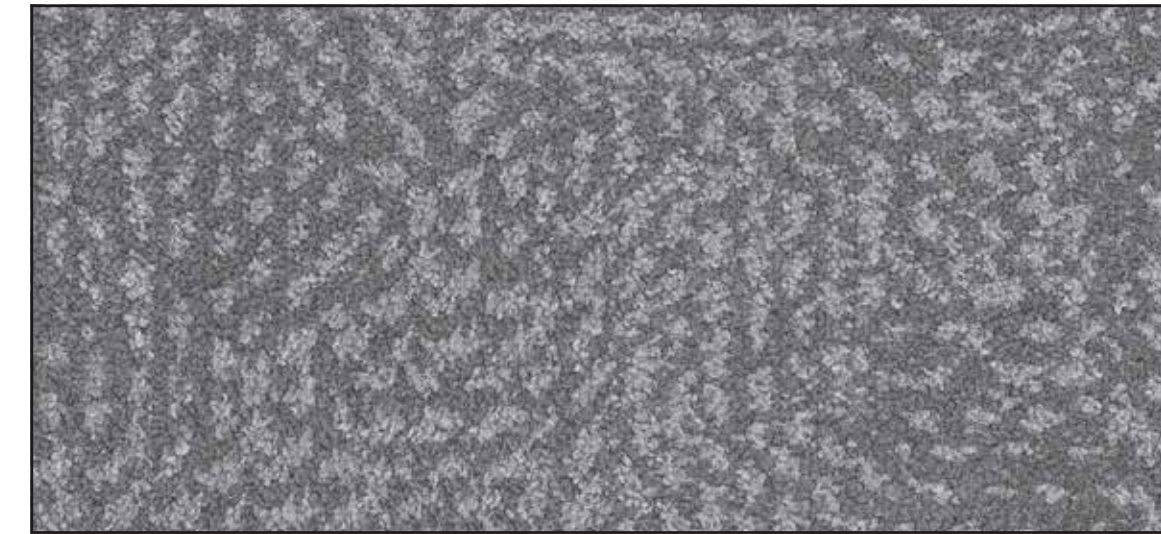
FRC-55068 914.4mm x 304.8mm 5mm + 1.5mm(IXPE)

FLORAFLOOR

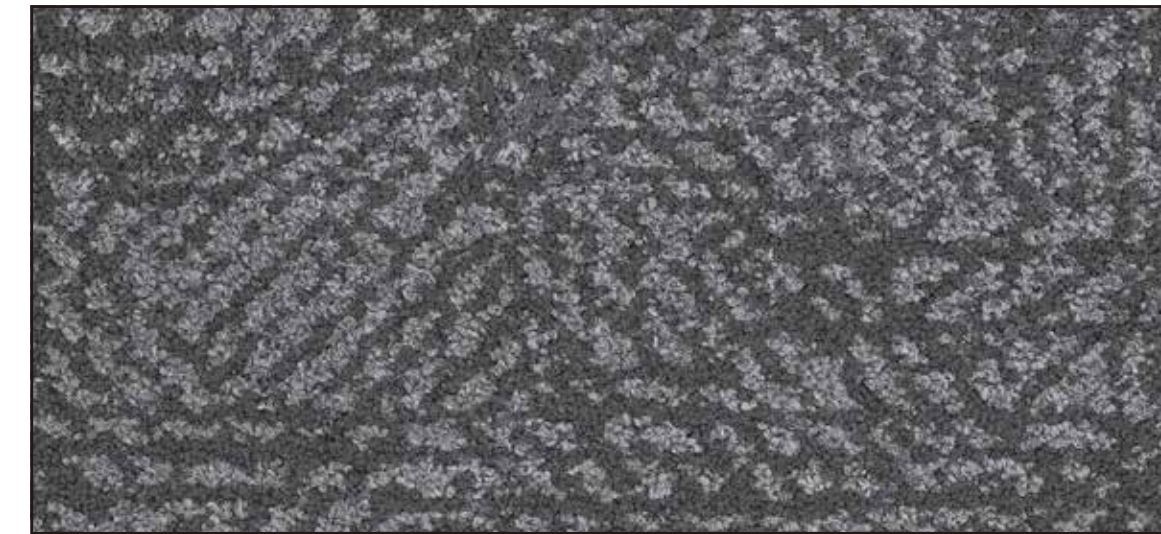
CUSTOM INFORMATION

- 5.0 mm
- 4.0 mm
- +
- 0.3 mm
- 0.55 mm
- +
- 1.5 mm (IXPE)
- 1.0 mm (IXPE)

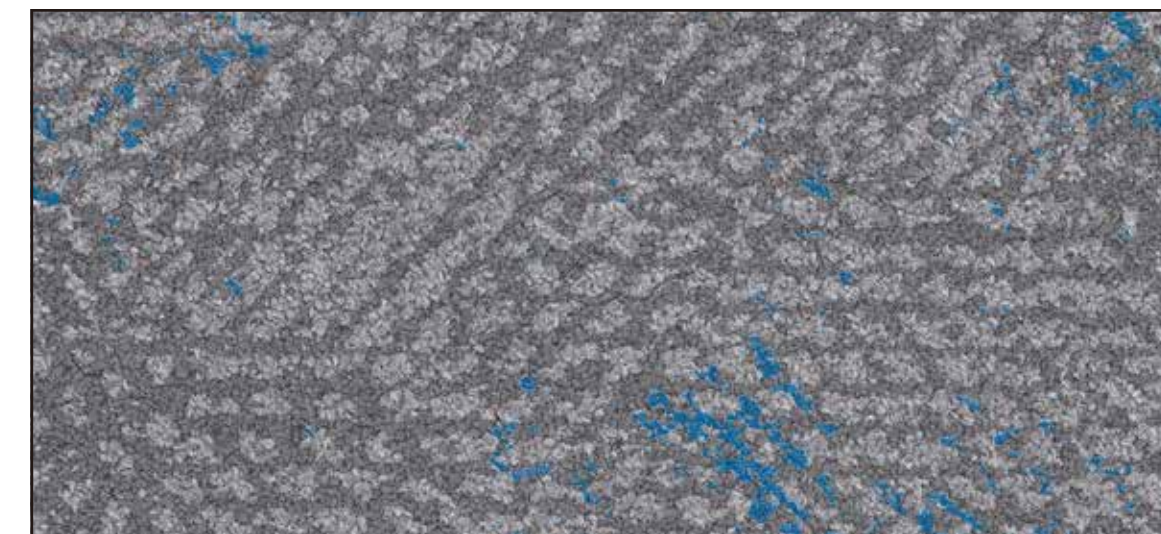
7
Series



FRC-55069 914.4mm x 304.8mm 5mm + 1.5mm(IXPE)



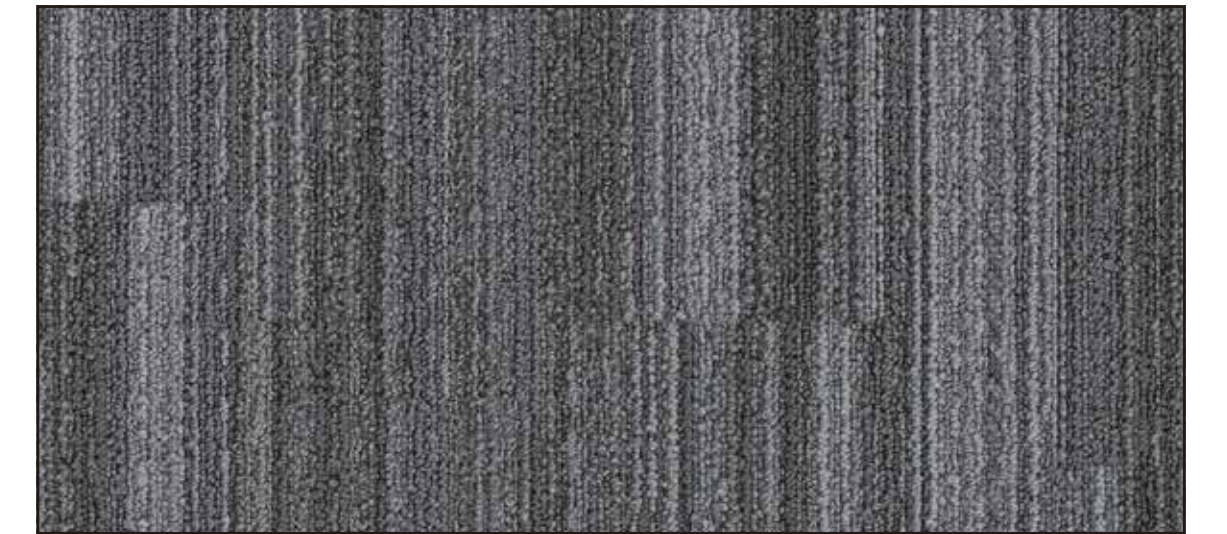
FRC-55070 914.4mm x 304.8mm 5mm + 1.5mm(IXPE)



FRC-55071 914.4mm x 304.8mm 5mm + 1.5mm(IXPE)



FRC-55072 914.4mm x 304.8mm 5mm + 1.5mm(IXPE)



FRC-55073 914.4mm x 304.8mm 5mm + 1.5mm(IXPE)



FRC-55074 914.4mm x 304.8mm 5mm + 1.5mm(IXPE)