

Technical Data 技术参数

项目 Characteristics	检测标准 Standards	结果 Result
长度 / 宽度 Length / Width	EN 427 EN ISO 24342 ASTM F2055 GB/T 4085-2015	$-0.13\% \leq X \leq 0.13\%$
厚度 Thickness	EN 428 EN ISO 24346 ASTM F386 GB/T 4085-2015	$-0.10 \text{ mm} \leq X \leq 0.13 \text{ mm}$
直角度 Squareness	EN 427 EN ISO 24342 ASTM F2055 GB/T 4085-2015	$\leq 0.25 \text{ mm}$
燃烧性能分级 Fire classification	EN 13501-1 GB 8624	B _{fl} - s1 B1
残余凹陷度 Residual indentation	EN 433 EN ISO 24343-1 ASTM F1914 GB/T 4085-2015	$\leq 0.10 \text{ mm}$ $\leq 8\%$ $\leq 0.10 \text{ mm}$
加热尺寸变化率 Dimensional stability	EN 434 EN ISO 23999 ASTM F2055 GB/T 4085-2015	$\leq 0.25\%$ $\leq 0.16\%$ $\leq 0.25\%$
加热翘曲 High temperature warping	EN 434 EN ISO 23999 ASTM F2199 GB/T 4085-2015	$\leq 2 \text{ mm}$
耐磨等级 Wear resistance	EN 660-2 GB/T 4085-2015	T
甲醛释放量 Formaldehyde emission	ISO 16000 GB 18580	未检出N.D.
耐光色牢度 Color fastness to light	EN ISO 105-B02 ASTM F1515 GB/T 4085-2015	≥ 6 $\Delta E \leq 8$ ≥ 6
耐污染性 Resistance to chemicals	EN 423 ASTM F925 GB/T 4085-2015	Class 0 表面无明显变化Excellent
剥离强度 Ply adhesion	EN ISO 24345 GB/T 11982.1	通过Pass $\geq 50\text{N}/50\text{mm}$
重金属 Heavy metal	EN 71-3 ASTM F963 GB 18586	可溶性铅, 可溶性镉未检出 Non Toxic
TVOC 检测 (mg/m ³) TVOC emission	ISO 16000 California Specification 01350	TVOC _{28day} $\leq 1.0\text{mg}/\text{m}^3$ $\leq 0.5\text{mg}/\text{m}^3$
脚轮椅测试 Castor chair resistance	EN 425 ISO 4918 GB/T 4085-2015	25000转无破坏No Visible Damage
防滑等级 Antislip	DIN 51130	$\geq R10$

FloraFloor office is
Estival head office :
115 rue Cardinet
75017 Paris

www.florafloor.com(FR)
www.florafloor.com.cn(CN)

10 Series- RVT Looselay
Sample Folder €7
Second published in April, 2024

FLORAFLOOR 240421



 FLORAFLOOR

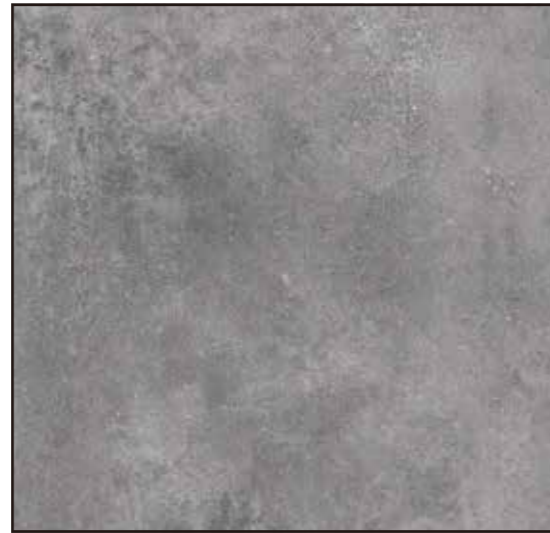
RVT - Rubber Vinyl Flexible Tile

10
Series





FTS-33056 912mm x 456mm 3.0mm



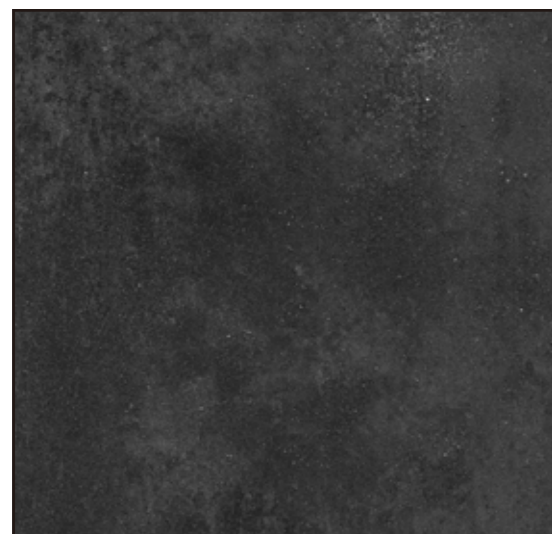
FTS-33057 912mm x 456mm 3.0mm



FTS-33058 912mm x 456mm 3.0mm



FTS-33059 912mm x 456mm 3.0mm



FTS-33060 912mm x 456mm 3.0mm



FTS-33061 912mm x 456mm 3.0mm

FLORAFLOOR

CUSTOM INFORMATION

- 3.0 mm
- 5.0 mm
- +
- 0.3 mm
- 0.55 mm

10
Series



FTW-31084 1227mm x 190mm 3.0mm



FTW-31085 1227mm x 190mm 3.0mm



FTW-31086 1227mm x 190mm 3.0mm



FTW-31087 1227mm x 190mm 3.0mm



FTW-31088 1227mm x 190mm 3.0mm



FTW-31089 1227mm x 190mm 3.0mm



FTW-31090 1227mm x 190mm 3.0mm



FTW-31091 1227mm x 190mm 3.0mm



FTW-31092 1227mm x 190mm 3.0mm



FTW-31093 1227mm x 190mm 3.0mm



FTW-31094 1227mm x 190mm 3.0mm



FTW-31095 1227mm x 190mm 3.0mm